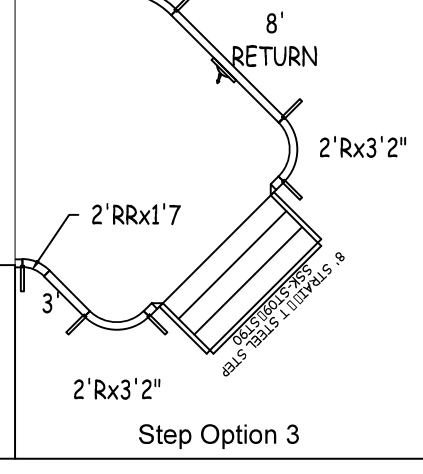
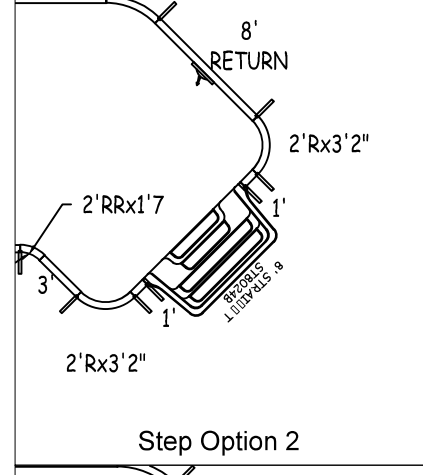
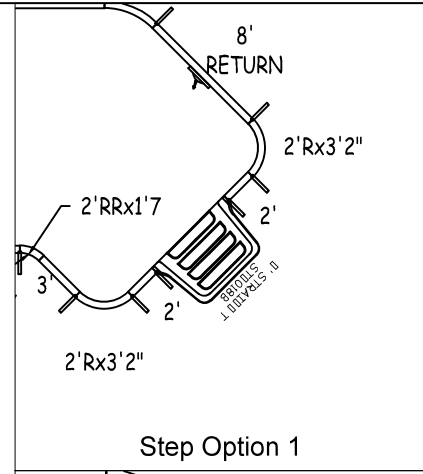
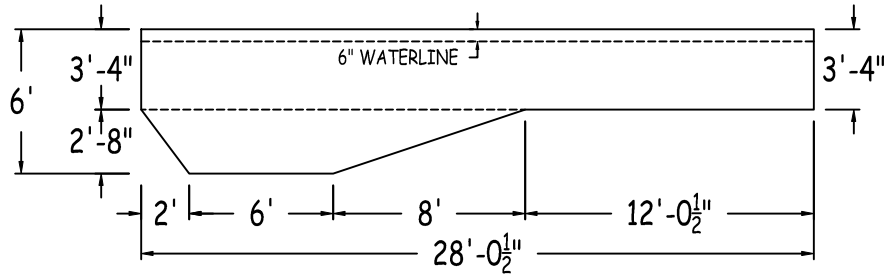
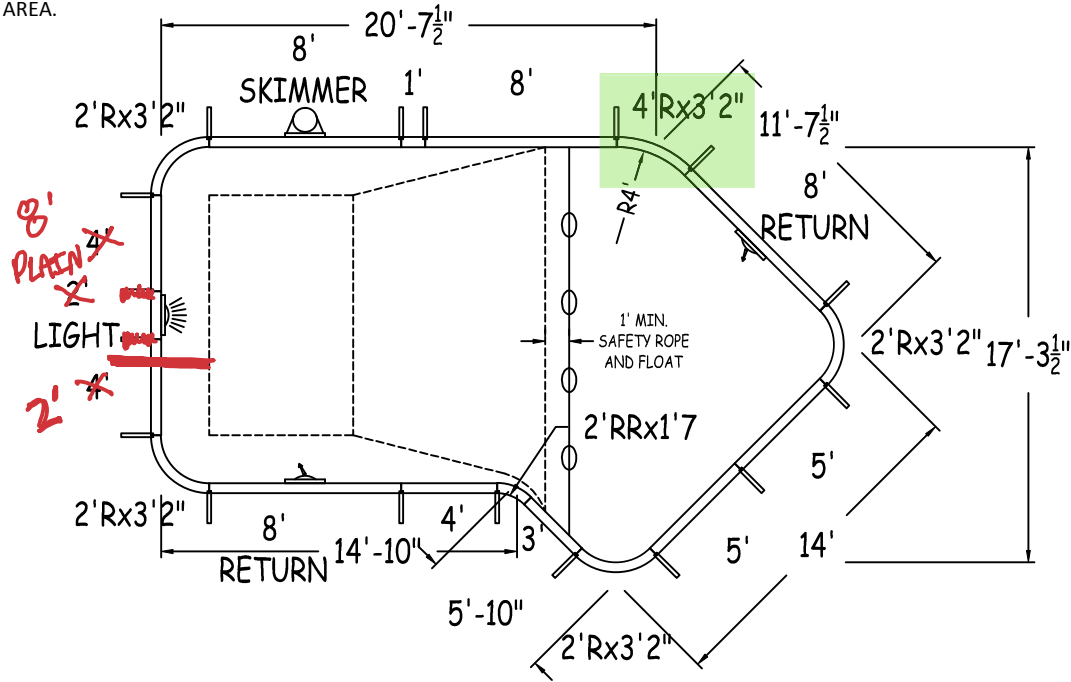
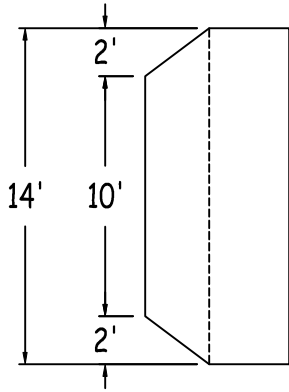


IN ACCORDANCE WITH ANSI/APSP/ICC-5 2011, THE INSTALLER IS RESPONSIBLE FOR PLACING ONE SKIMMER FOR EVERY 800 SQUARE FEET OF SURFACE AREA AND ONE RETURN FOR EVERY 300 SQUARE FEET OF SURFACE AREA.



LATHAM STEEL	LAZY-L-2FT RAD 14-0 X 17-4 X 28-0 LEFT			
42" STEEL PANELS	PERIMETER:	77'-3"	VOLUME (US Gal):	10200
DWG#:	SURFACE (ft²):	367	VOLUME (Liters):	38600
USLL24S1428L16	LINER (ft²):	370	DATE:	1/1/2016
KIT#:	COVER (ft²):	455	DSR:	151
LL24S1428			SCALE:	1/8" = 1'-0"



NON-DIVING POOL

USE OF DIVING EQUIPMENT IS PROHIBITED

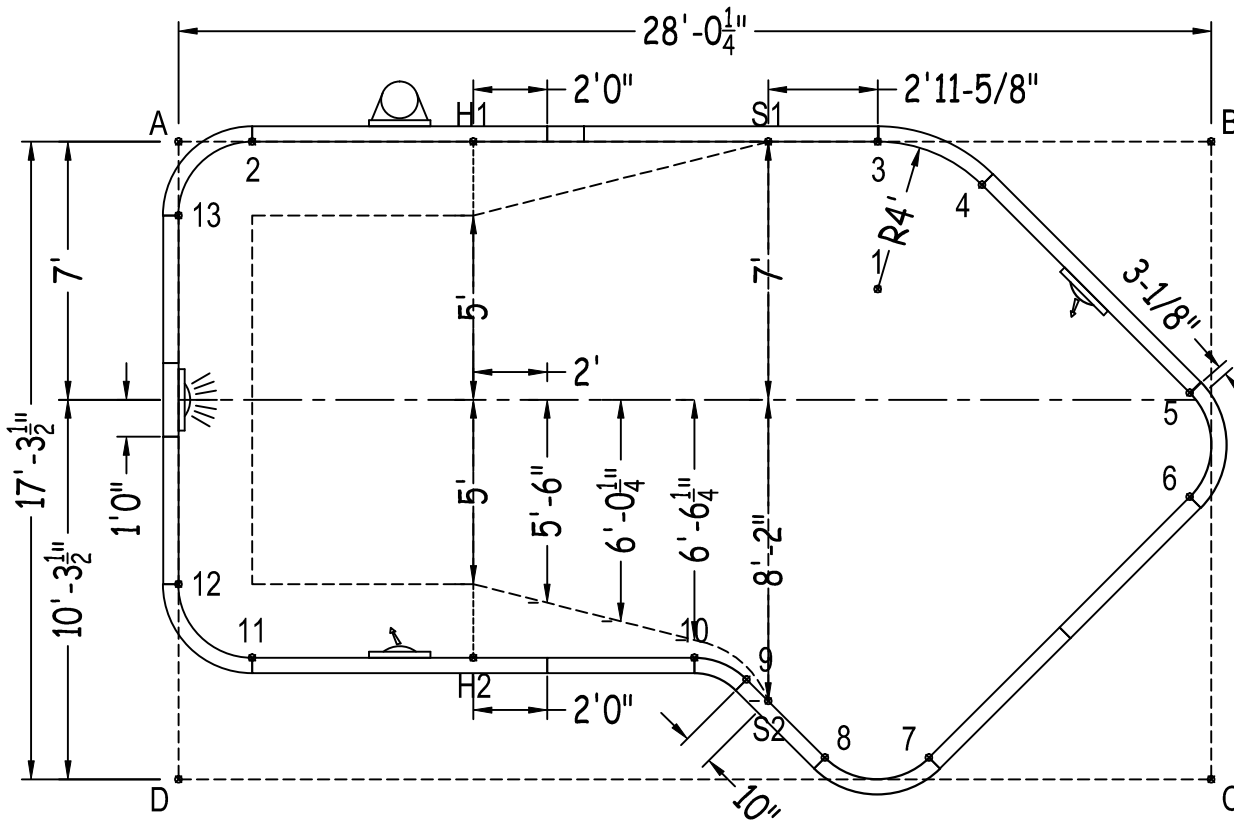
MEETS DEPTH AND SHAPE MINIMUM STANDARD ANSI/APSP/ICC-5 2011

LAZY-L-2FT RAD

SHEET: 1 OF 2

Diagonals	2 To11	14'-0"	4 To7	15'-7 1/4"	6 To7	10'-0"	8 To11	15'-9 1/4"
S1ToS2	2 To12	12'-2"	4 To8	16'-1 1/4"	6 To8	12'-2"	8 To12	18'-2"
H1ToH2	2 To13	2'-10"	4 To9	14'-10 1/4"	6 To9	13'-0"	8 To13	22'-10 3/4"
S1ToH1	3 To4	3'-3/4"	4 To10	15'-1/4"	6 To10	14'-1 1/2"	9 To10	1'-6 1/4"
S2ToH2	3 To5	10'-10 1/4"	4 To11	23'-7"	6 To11	25'-9 3/4"	9 To11	13'-5"
S1ToH2	3 To6	12'-10"	4 To12	24'-4"	6 To12	27'-6 1/2"	9 To12	15'-7 1/2"
H1ToS2	3 To7	16'-9 1/4"	4 To13	21'-9 3/4"	6 To13	28'-5 3/4"	9 To13	19'-10 3/4"
2 To3	3 To8	16'-9 1/4"	5 To6	2'-10"	7 To8	2'-10"	10To11	12'-0"
2 To4	3 To9	15'-1/4"	5 To7	12'-2"	7 To9	5'-4 1/2"	10To12	14'-1 3/4"
2 To5	3 To10	14'-10 1/4"	5 To8	14'-0"	7 To10	6'-11"	10To13	18'-5 1/4"
2 To6	3 To11	22'-0"	5 To9	14'-3 3/4"	7 To11	18'-6 3/4"	11To12	2'-10"
2 To7	3 To12	22'-5 1/4"	5 To10	15'-2 3/4"	7 To12	20'-10 3/4"	11To13	12'-2"
2 To8	3 To13	19'-1"	5 To11	26'-5 1/4"	7 To13	25'-1 1/2"	12To13	10'-0"
2 To9	4 To5	7'-11 3/4"	5 To12	27'-11"	8 To9	3'-0"		
2 To10	4 To6	10'-2"	5 To13	27'-10 1/4"	8 To10	4'-5 1/2"		

Part number	Description	Base	Option 1	Option 2	Option 3
		QTY	QTY	QTY	QTY
ST0960002X	8'	1	1	1	1
ST0960002*	8' SKIMMER	1	1	1	1
ST0960002*	8' RETURN	2	2	2	2
ST0600001X	5'	2	-	-	-
ST0480001X	4'		3	3	3
ST0360000X	3'		1	1	1
ST0240000*	2' LIGHT		1	1	1
ST0240000X	2'		-	2	-
ST0120000X	1'		1	1	3
CN0380481X	4'Rx3'2"		1	1	1
CN0380241X	2'Rx3'2"		4	4	4
CR0190240X	2'RRx1'7		1	1	1
SSC-TRST1207	12" Straight Transition		-	-	-
Brace	Brace		17	18	18
IPC-STKPK25	REBAR STAKE 18" 25PC		2	2	2
IPC-HDWSTRT150	BOLT STR 3/8-16X1" C/W NUT 150PC		2	2	2
ST6018B	THKSHT STEP STR 6'		-	1	-
ST8024B	THKSHT STEP STR SIT N STEP 8'		-	-	1
SSK-ST096ST90	STEEL STEP STR-90D 3 TRD 8'		-	-	-



	A	B	C	D
1	19'-4 3/4"	9'-10 3/4"	16'-1"	23'-2"
2	2'-0"	26'-1/4"	31'-3"	17'-5"
3	18'-11 3/4"	9'-1/2"	19'-6 1/4"	25'-8"
4	21'-10"	6'-4"	17'-3 1/4"	27'-1 1/4"
5	28'-3 1/4"	6'-10"	10'-6"	29'-4 1/2"
6	29'-1"	9'-7 3/4"	7'-8 1/4"	28'-5 3/4"
7	26'-4"	18'-4 1/2"	7'-8 1/4"	20'-4 1/2"
8	24'-2 3/4"	19'-8 3/4"	10'-6"	17'-6 1/2"
9	21'-2 3/4"	19'-3 1/4"	12'-10 3/4"	15'-7 3/4"
10	19'-9 1/2"	19'-9 3/4"	14'-4 3/4"	14'-4 1/2"
11	14'-1 3/4"	29'-6 1/2"	26'-2 3/4"	3'-10 1/4"
12	12'-0"	30'-5 3/4"	28'-6 1/4"	5'-3 1/2"
13	2'-0"	28'-1"	31'-11"	15'-3 1/2"
S2	22'-1/2"	19'-4 1/4"	12'-2 1/2"	16'-1 3/4"
S1	16'-0"	12'-1/4"	21'-3/4"	23'-6 3/4"
H2	16'-1 1/2"	24'-5 1/4"	20'-3 1/2"	8'-7 3/4"
H1	8'-0"	20'-1/4"	26'-5 1/2"	19'-3/4"
A	-	28'-1/4"	32'-11 1/4"	17'-3 1/2"

LAZY-L-2FT RAD 14-0 X 17-4 X 28-0 LEFT

DWG #: USLL24S1428L16

DATE: 1/1/2016

SHEET: 2 OF 2