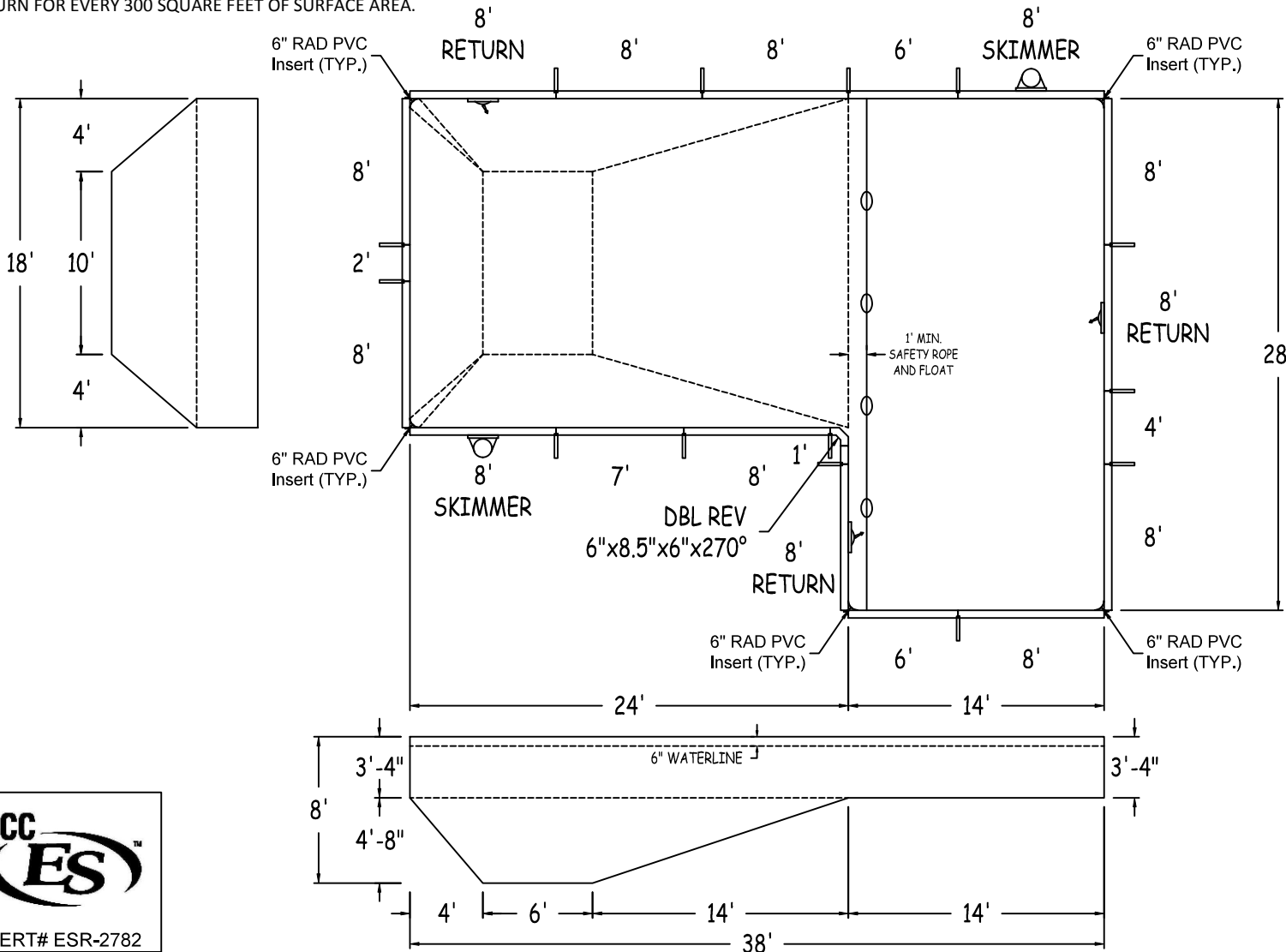


IN ACCORDANCE WITH ANSI/APSP/ICC-5 2011, THE INSTALLER IS RESPONSIBLE FOR PLACING ONE SKIMMER FOR EVERY 800 SQUARE FEET OF SURFACE AREA AND ONE RETURN FOR EVERY 300 SQUARE FEET OF SURFACE AREA.

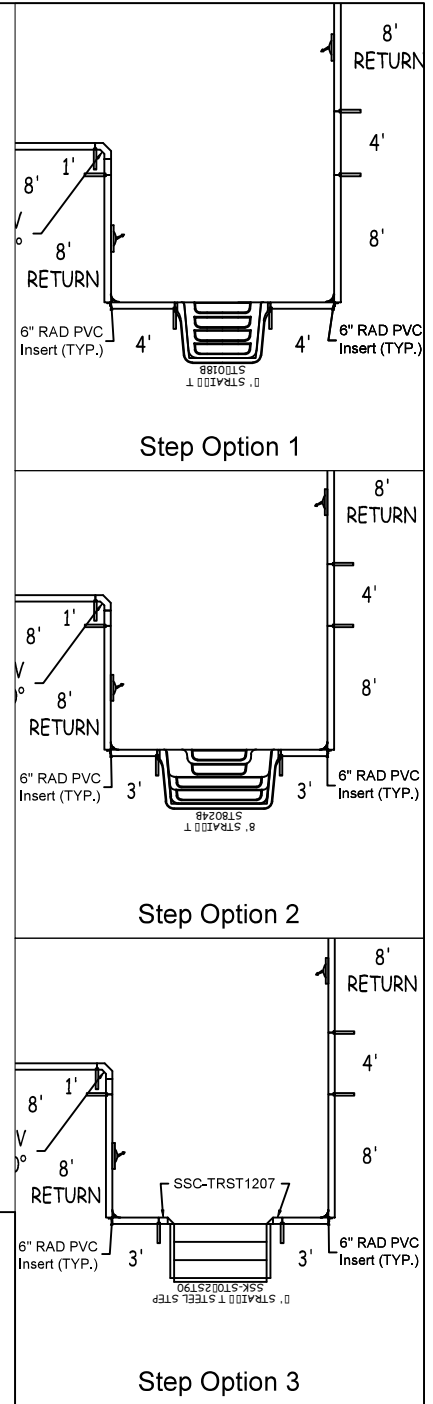


LATHAM STEEL	FULL-L-6IN RAD 18-0 X 28-0 X 38-0 LEFT			
42" STEEL PANELS	PERIMETER:	131'-9"	VOLUME (US Gal):	27100
DWG#:	SURFACE (ft²):	824	VOLUME (Liters):	102600
USSLO6S1838L16	LINER (ft²):	824	DATE:	1/1/2016
KIT#:	COVER (ft²):	960	DSR:	136
SL06S1838	SCALE:	N/A		



DIVING/SLIDING EQUIPMENT SHALL BE DESIGNED FOR SWIMMING POOLS AND SHALL BE INSTALLED IN ACCORDANCE WITH THE DIVING/SLIDING EQUIPMENT MANUFACTURER'S SPECIFICATIONS. PLEASE CONTACT THE DIVING/SLIDING EQUIPMENT MANUFACTURER FOR THEIR SPECIFICATIONS.

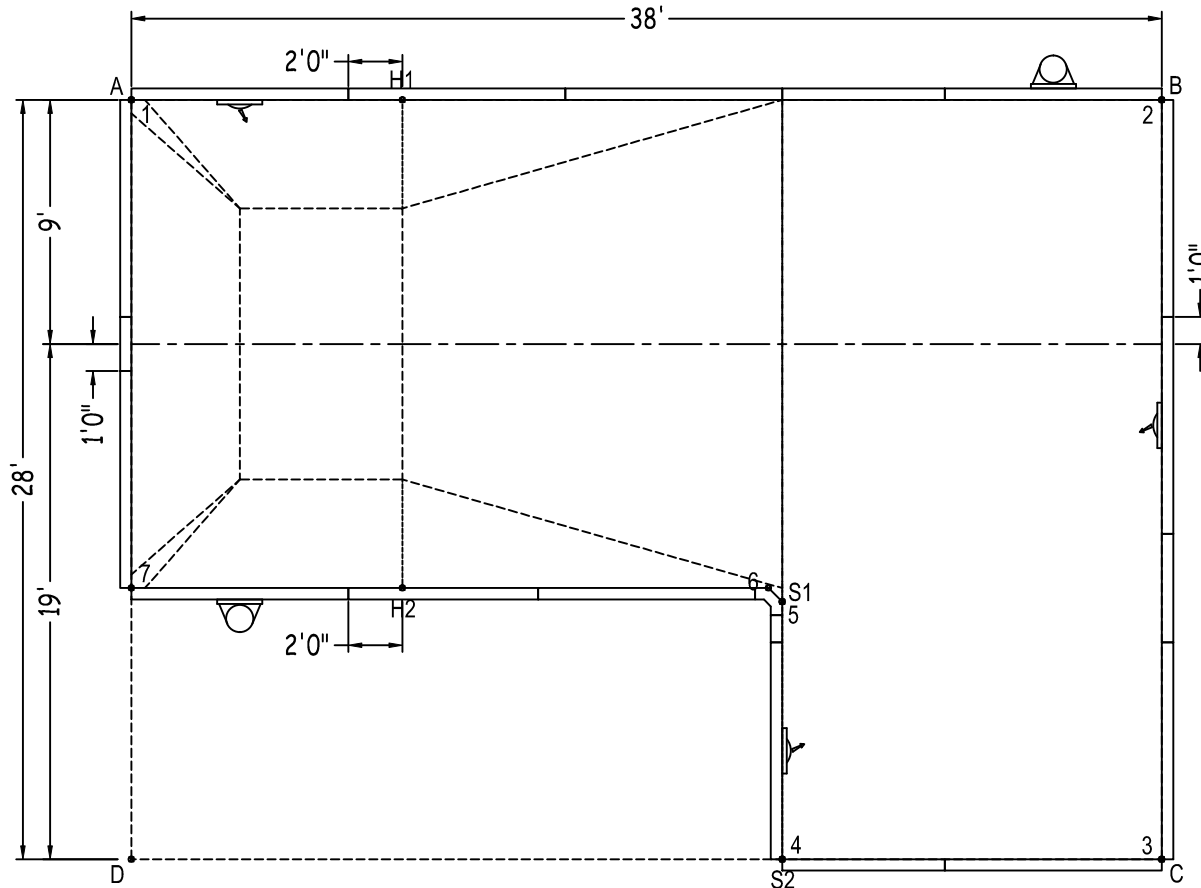
MEETS DEPTH AND SHAPE MINIMUM STANDARD ANSI/APSP/ICC-5 2011



FULL-L-6IN RAD

SHEET: 1 OF 2

Diagonals		1 to 5	30'-3 3/4"	3 to 6	17'-7 1/2"
S1toS2	9'-6"	1 to 6	29'-7 1/4"	3 to 7	39'-3 1/2"
H1toH2	18'-0"	1 to 7	18'-0"	4 to 5	9'-6"
S1toH1	23'-2 1/2"	2 to 3	28'-0"	4 to 6	10'- 1/4"
S2toH2	17'-2 1/2"	2 to 4	31'-3 3/4"	4 to 7	26'-0"
S1toH2	14'-0"	2 to 5	23'-2 1/2"	5 to 6	8 1/2"
H1toS2	31'-3 3/4"	2 to 6	23'-1 1/4"	5 to 7	24'-0"
1 to 2	38'-0"	2 to 7	42'- 1/2"	6 to 7	23'-6"
1 to 3	47'-2 1/2"	3 to 4	14'-0"		
1 to 4	36'-10 1/2"	3 to 5	16'-11"		



Part number	Description	Base	Option 1	Option 2	Option 3
		QTY	QTY	QTY	QTY
ST0960002X	8'	8	7	7	7
ST0960002*	8' SKIMMER	2	2	2	2
ST0960002*	8' RETURN	3	3	3	3
ST0840002X	7'	1	1	1	1
ST0720001X	6'	2	1	1	1
ST0480001X	4'	1	3	1	1
ST0360000X	3'	-	-	2	2
ST0240000X	2'	1	1	1	1
ST0120000X	1'	1	1	1	1
DR06090690	DBL REV 6"x8.5"x6"x270°	1	1	1	1
SSC-TRST1207	12" Straight Transition	-	-	-	2
Brace	Brace	14	15	15	15
IPC-AB90	CONNECTOR CNR ANGLE 90D 42"	5	5	5	5
IPC-AB90-INS6R	CORNER INSERT 6" RAD PVC 42"	5	5	5	5
IPC-STKPK25	REBAR STAKE 18" 25PC	2	2	2	2
IPC-HDWSTRT150	BOLT STR 3/8-16X1" C/W NUT 150PC	2	2	2	2
ST6018B	THKSHT STEP STR 6'	-	1	-	-
ST8024B	THKSHT STEP STR SIT N STEP 8'	-	-	1	-
SSK-ST072ST90	STEEL STEP STR-90D 3 TRD 6'	-	-	-	1

	A	B	C	D
1	0"	38'-0"	47'-2 1/2"	28'-0"
2	38'-0"	0"	28'-0"	47'-2 1/2"
3	47'-2 1/2"	28'-0"	0"	38'-0"
4	36'-10 1/2"	31'-3 3/4"	14'-0"	24'-0"
5	30'-3 3/4"	23'-2 1/2"	16'-11"	25'-9 3/4"
6	29'-7 1/4"	23'-1 1/4"	17'-7 1/2"	25'-6 1/2"
7	18'-0"	42'- 1/2"	39'-3 1/2"	10'-0"
S2	36'-10 1/2"	31'-3 3/4"	14'-0"	24'-0"
S1	30'-3 3/4"	23'-2 1/2"	16'-11"	25'-9 3/4"
H2	20'-7"	33'-3 1/2"	29'-8 3/4"	14'-1 3/4"
H1	10'-0"	28'-0"	39'-7 1/4"	29'-8 3/4"
A	-	38'-0"	47'-2 1/2"	28'-0"

FULL-L-6IN RAD 18-0 X 28-0 X 38-0 LEFT

DWG #: USSL06S1838L16

DATE: 1/1/2016

SHEET: 2 OF 2