

TRITON® II FIBERGLASS SAND FILTER



THE #1 SAND FILTER IN THE WORLD

The Triton II filter is the result of over 40 years of product evolution and refinement. It has set the industry standard for effectiveness, efficiency, long runs between service and providing years of dependable, low maintenance operation.

The Triton II filter features a special internal design that keeps the sand bed level, ensuring even water flow and resulting in the most efficient filtration possible.

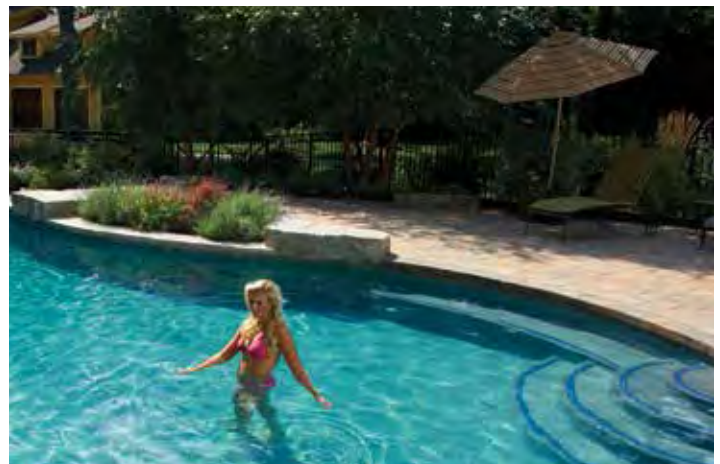
- Time-proven internal design ensures that all water receives maximum filtration for crystal clear results.
- GlasLok™ Process creates a one-piece, fiberglass-reinforced tank with a UV-resistant coating for years of dependable, corrosion-resistant service.
- Flow system design controls filtration quality and ensures maximum run times between backwashing to save you time.

THE BEST REPUTATION IN THE INDUSTRY FOR ALL THE RIGHT REASONS

Besides its superior filtration performance, the Triton II filter delivers a level of dependability and ease of operation and maintenance for a track record that's unsurpassed. Every design detail has been refined to make the Triton II filter the industry standard.

ADDITIONAL FEATURES INCLUDE:

- Combination sand and water drain speeds servicing and winterizing.
- All internal parts are threaded for ease of maintenance.
- Swing-away water diffuser allows instant access to sand and all internal parts.



TRITON® II FIBERGLASS SAND FILTER

Easy access, heavy-duty closure with built-in pressure relief valve makes inspection and maintenance fast, safer and easy

Threaded bulkhead connectors for easier installation and service

GlasLok™ Process creates a one-piece, fiberglass-reinforced tank with UV-resistant surface finish for years of unequaled strength and durability



Model Number	Filter Area Sq. Ft.	Vertical Clearance*	Filter Diameter	Required Sand† (lbs)	Flow Rate GPM (Comm.)	Turnover Capacity-Res. (Gallons)		
						8 hrs.	10 hrs.	12 hrs.
TR 40	1.92	32.5"	19"	175	38	18,240	22,800	27,360
TR 50	2.46	36.75"	21"	225	49	23,520	29,400	35,280
TR 60	3.14	37.5"	24"	325	63	30,240	37,800	45,360
TR 100	4.91	41.75"	30"	600	74	35,520	44,400	53,280
TR 140	7.06	47.25"	36"	925	106	50,880	63,600	76,320

†Use standard #20 silica sand.

*Required clearance to remove the closure.

AVAILABLE FROM:



1620 HAWKINS AVE, SANFORD, NC 27330 800.831.7133 WWW.PENTAIRPOOL.COM

All Pentair trademarks and logos are owned by Pentair or one of its global affiliates. Triton® and GlasLok™ are trademarks and/or registered trademarks of Pentair Water Pool and Spa, Inc. and/or its affiliated companies in the United States and/or other countries. Because we are continuously improving our products and services, Pentair reserves the right to change specifications without prior notice. Pentair is an equal opportunity employer.

pumps • filters • heaters • heat pumps • automation • lighting • cleaners • sanitizers • water features • maintenance products